

## DATA SHEET

### R2DC 300 Hot Water Storage Tank



Main features	
Application	Hot water tank intended for DHW heating, with 2 integrated enamelled heat exchangers. It comes fitted with insulation and a magnesium anode rod that protects its inner surface from corrosion. As an option, an electronic anode rod can be installed instead of the magnesium one, for the codes see the Accessories table. If desired, an electric heating element can be installed into the hot water tank.
Working fluid	water (tank); water, water/glycol mixture (max. 1:1) or water/glycerine mixture (max. 2:1) (heat exchangers)
Code	<b>11352</b>

Energy Efficiency Data (as per EC Regulation No. 812/2013)	
Energy efficiency class	C
Standing loss	85 W
Storage volume	275 l

Technical data	
Total tank volume	293 l
Fluid volume in tank	275 l
Upper heat exchanger (HE) volume	8 l
Lower heat exchanger (HE) volume	10 l
Upper heat exchanger surface area	1.0 m <sup>2</sup>
Lower heat exchanger surface area	1.5 m <sup>2</sup>
Max. working temperature in tank	95 °C
Max. working temperature in HE	110 °C
Max. working pressure in tank	10 bar
Max. working pressure in HE	10 bar
Tank diameter	500 mm
Tank diameter with insulation	597 mm
Tank overall height	1791 mm
Tipping height	1860 mm
Empty weight	125 kg

Hot water heating from 10 °C to 45 °C at heating water inlet temperature 60 °C	
Upper heat exchanger	400 l/h (16 kW)
Lower heat exchanger	590 l/h (24 kW)

Materials	
Tank material	S235JR, inner surface enamelled (DIN 4753-3)
Heat exchanger material	S235JR+N, outer surface enamelled (DIN 4753-3)
Tank perimeter insulation	PUR foam (hard)
Insulation's outer surface	plastic

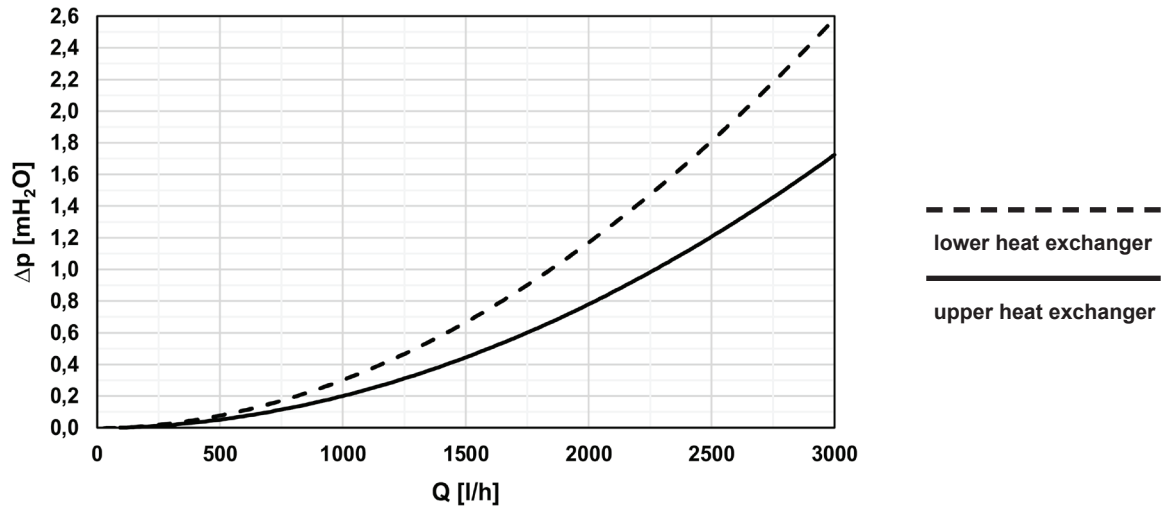
Accessories	
El. heating element	models ETT-A, D, F, P, M
Max. length of the heating element to the E1 connection	500 mm
Electronic anode rod	code 17378

Spare parts (magnesium anode rods)	
Mg anode rod A1 (G 5/4")	code 448
Mg anode rod A2 (G 3/4")	code 1998

## DATA SHEET

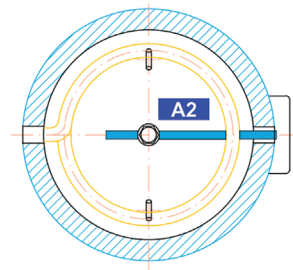
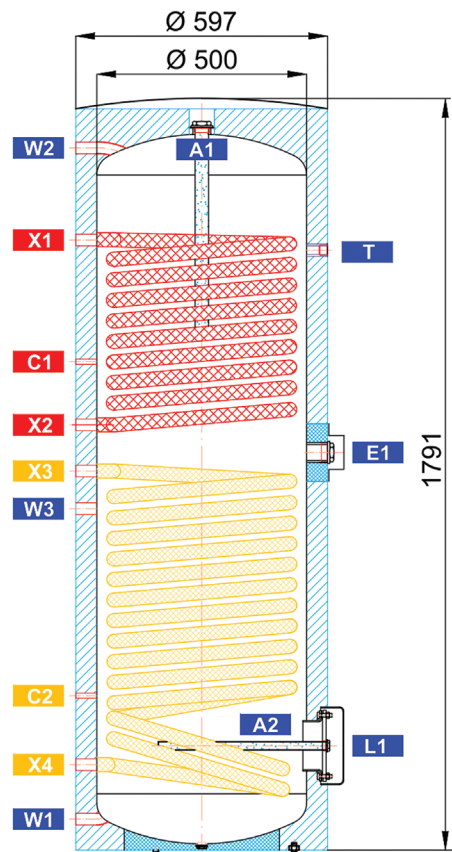
### R2DC 300 Hot Water Storage Tank

#### Heat exchanger pressure drop



#### Dimensions

pos.	description	connection	height [mm]
<b>DHW heating</b>			
W1	cold water	G 3/4" M	74
W2	hot water	G 3/4" M	1674
W3	recirculation	G 3/4" F	814
<b>Auxiliary heat source</b>			
E1	electric heating element	G 6/4" F	948
<b>Control and safety</b>			
C1	temperature sensor – upper	G 1/2" F	1165
C2	temperature sensor – lower	G 1/2" F	369
T	temperature indicator	–	1450
<b>Heat sources</b>			
X1	supply from heat source	G 3/4" M	1454
X2	return to heat source	G 3/4" M	1014
X3	supply from heat source	G 3/4" M	904
X4	return to heat source	G 3/4" M	204
<b>Other components</b>			
L1	flange	8 x M10	249
A1	magnesium anode rod	G 5/4" F	1722
A2	magnesium anode rod	G 3/4" F	249



1) C1 and C2 tapings are supplied incl. adapter G 1/2" M – M12 x 1.5 and cable gland.  
 2) Earthing metal strip is run through the insulation next to the upper part of the DHW tank.