

FLOW SWITCHES

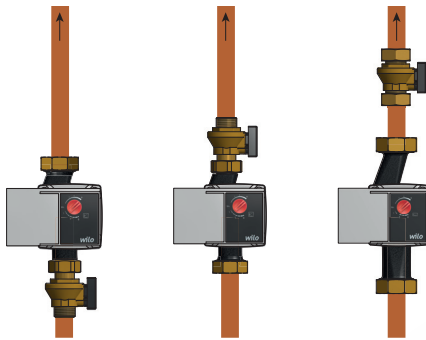


FP Flow Switch

Flow switches are designed to control pump operation or a minimum flow rate in a device in sealed heating or cooling systems. They are intended neither for sanitary nor for drinking water.

They enable automatic switching off a device when its operation is undesirable or dangerous due to a low flow rate. The device is switched on again as soon as the nominal flow rate is reached.

They shall be installed either next to a circulation pump, downstream or upstream, using a 1" union nut, or to a pipe using its 3/4" male thread.



They are applied in systems where immediate reaction is needed. They are used in gas boilers to protect heat exchangers against overheating caused by a low flow. Repeated overheating will destroy a heat exchanger after some time. When a flow switch is used, the appliance can react more quickly than with a temperature sensor, and overheating never occurs.

When installed with cooling units (chillers) or heat pumps, the flow switch protects a heat exchanger against bursting from frost. If a circulation pump failed and the unit continued working without a flow switch, the little fluid volume in the plate heat exchanger would freeze up immediately – before a temperature sensor would even react.

Technical Data

MAX. WORKING TEMPERATURE	110 °C
MAX. WORKING PRESSURE	3 bar
SWITCH-ON (SWITCH-OFF*) FLOW RATE VALUE	400 l/h (±50 l/h)
SWITCH-OFF (SWITCH-ON*) FLOW RATE VALUE	350 l/h (±50 l/h)
MIN. SWITCH-ON PRESSURE DIFFERENCE	25 ± 5 mbar

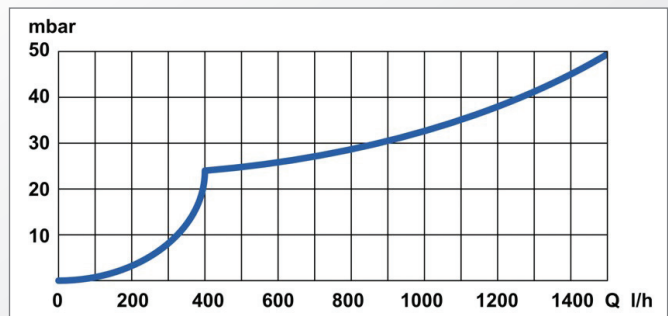
* depends on the changeover contact wiring

MICROSWITCH

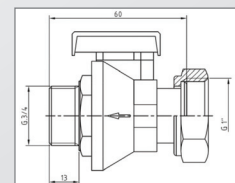
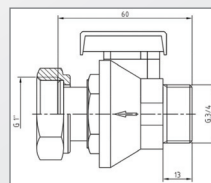
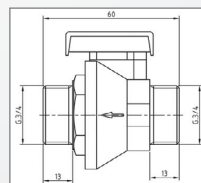
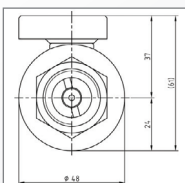
TERMINALS	2.8 x 0.5 mm
CONTACTS	changeover
IP RATING	IP 40

MATERIALS

BODY	brass – CW617N
GASKET	plastic – NORYL GFN3 NBR (EPDM)



Dimensions and models



MODEL	FP204-1	FP204-2	FP214-1	FP214-2	FP224-1	FP224-2
CONNECTION SIZE	3/4" M x 3/4" M	3/4" M x 3/4" M	3/4" M x 1" F	3/4" M x 1" F	1" F x 3/4" M	1" F x 3/4" M
SWITCHING VOLTAGE	250 VAC	4 ÷ 30 V	250 VAC	4 ÷ 30 V	250 VAC	4 ÷ 30 V
SWITCHING CURRENT	0.05 ÷ 5 A	1 ÷ 100 mA	0.05 ÷ 5 A	1 ÷ 100 mA	0.05 ÷ 5 A	1 ÷ 100 mA
CODE	381	13552	382	13553	383	4247

