

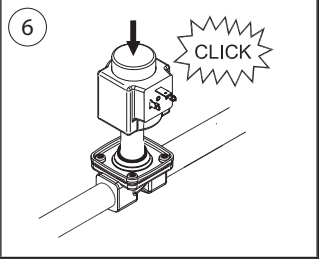
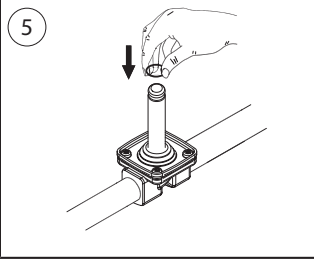
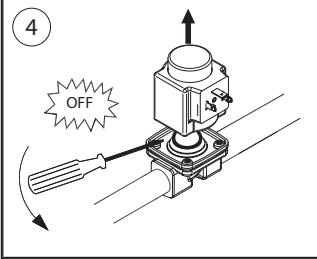
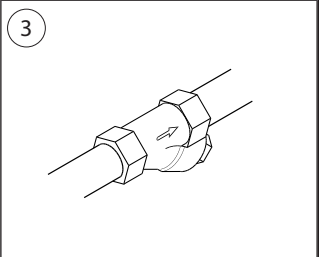
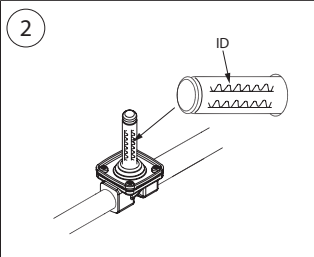
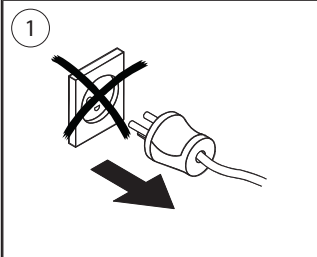
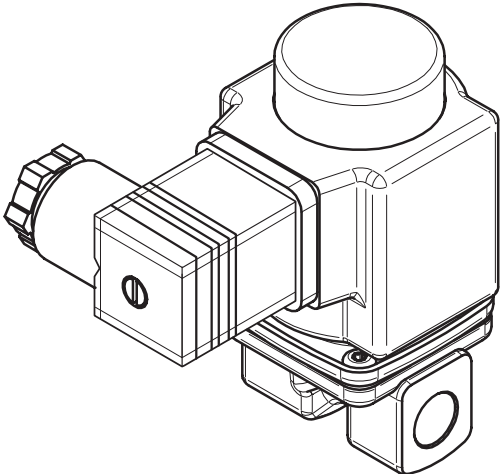
Installation guide

Solenoid valve

Type EV251B

032R9279

032R9279



7 max. 15° max. 15°

8 max. 15° max. 15°

9

10

11

12

13

14

15

16 Max. PT Bar

DN	MWP	Max. test pressure PT
	[bar]	[bar]
10 - 22	10	15

EN 60730-2-8

Visit www.products.danfoss.com for further technical data

Para más información, visite www.products.danfoss.es

Rendez-vous sur le site www.products.danfoss.fr pour plus de données techniques