

XIV. 3-WAY ELECTRIC MOTOR ACTUATED BALL VALVES

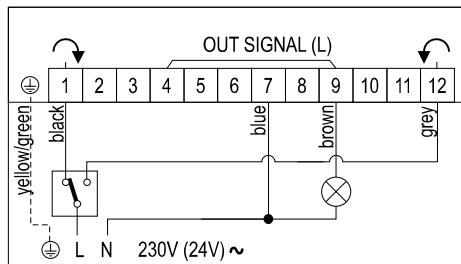
EMV 110 - series 830 – T shaped ball valve – horizontal version



EMV110 series electric motor actuated ball valve enables diverting flow in all directions, including the possibility of closing flow for each port. Valve usage offers many possibilities in heating systems (solar, remote, house-heating), sanitary water applications, hot blast heating, cooling systems, swimming pools, chemical and process industry, petrochemical industry, alternative heating and agricultural purposes.

Features:

- T shaped ball valve – flow in all directions
- Output electric signal (L) at the end position of the actuator (circulation pump control)

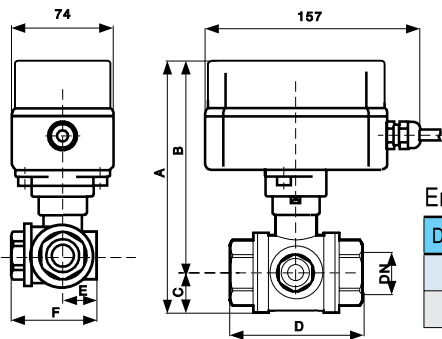


Actuator characteristics:

- Supply voltage: 230VAC/50Hz, *24VAC/50Hz
- Power consumption: 7VA
- Micro switch rating: 1(1)A, 230VAC
- Protection class (in accordance with EN-60335-1): I
- Enclosure rating (in accordance with IEC60529): IP55
- In accordance with: EMC directive: 2004/108/EEC,
- LV Directive: 2006/95/EEC, PAH directive: 2005/69/EEC
- Ambient temperature: 0...55°C
- Humidity: RH 0%...80% (non condensed)
- Storage temperature: -10...+70°C
- Connection cord: 5x0.5mm², L=1.5m
- Position indication: support of the valve
- Possibility of manual control: yes
- Direction of rotation: defined
- Built in relay module: no

Valve characteristics:

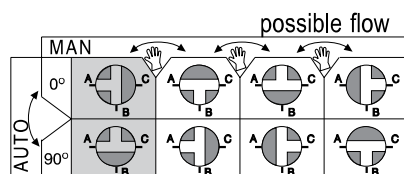
- Connections: 3-port, internal thread
- Medium: water, nonaggressive fluid, air, glycol < 30%
- Medium temperature: +5°C...110°C
- Working pressure: max. 16bar
- Material:
 - Valve body: brass CuZn40Pb2 Ni
 - Ball: brass CuZn40Pb2 Cr
 - O-rings: PTFE, FKM, EPDM



Ends: female/female/female

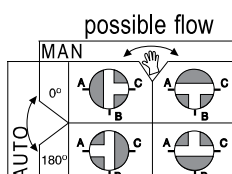
DN	A	B	C	D	E	F	Kvs	kg
20 - 3/4"	164	136	24	80	30	73	5,5	1,7
25 - 1"	172	140	27	114	57	88	9,2	2,4

* Kvs=m³/h Δp=1bar



3-POINT CONTROL Rotation angle: 25s/90°

Code	Type	DN	Voltage	Time	MAX Torque
10323	EMV 110 830/590-3	20 - 3/4"	230VAC, 50Hz	25s / 90°	6Nm
10324	EMV 110 830/590-4	25 - 1"	230VAC, 50Hz	25s / 90°	6Nm
*10325	EMV 110 830/593-3	20 - 3/4"	24VAC, 50Hz	25s / 90°	6Nm
*10326	EMV 110 830/593-4	25 - 1"	24VAC, 50Hz	25s / 90°	6Nm



3-POINT CONTROL Rotation angle: 50s/180°

Code	Type	DN	Voltage	Time	MAX Torque
*10020	EMV 110 830/570-3	20 - 3/4"	230VAC, 50Hz	50s / 180°	6Nm
*10021	EMV 110 830/570-4	25 - 1"	230VAC, 50Hz	50s / 180°	6Nm
*10327	EMV 110 830/573-3	20 - 3/4"	24VAC, 50Hz	50s / 180°	6Nm
*10328	EMV 110 830/573-4	25 - 1"	24VAC, 50Hz	50s / 180°	6Nm